



# ELPHISTONE

HOTEL AND SUITE APTS.



An underwater scene at sunset. The water is a deep blue, with the surface reflecting the warm orange and red light of the setting sun. In the foreground, there is a vibrant coral reef with various types of coral, including branching and rounded forms. Numerous small, dark fish are swimming in the water, some near the coral and others further away. The overall atmosphere is serene and beautiful.

**Experience the beauty** of Marsa Alam at your doorstep.













## About Elphistone Hotel & Suite Apartments

Situated north of Marsa Alam on the Red Sea, just 30 minutes from Marsa Alam Airport and two hours from Hurghada, Elphistone Hotel & Suite Apartments is a haven of relaxation and adventure. This unique destination blends a luxurious aparthotel concept with comfortable residential living, catering to diverse needs and preferences.

### **Elphistone offers two distinct living options:**

#### **Aparthotel Units**

Fully furnished serviced apartments designed for convenience and a hassle-free stay.

#### **Residences**

Fully finished units equipped with ACs and kitchen cabinets, but without appliances, allowing you to personalize your space.

Whether you're here to enjoy the Marsa Alam lifestyle or invest in a tranquil seaside retreat, Elphistone delivers an exceptional experience in one of Egypt's most iconic locations.



Cairo

Asyut

Sohag

Luxor

Aswan

Hurghada

65

Qusseir

65

65

Sharm EL-Sheikh

Marsa Alam

65





## Prime Location

Situated 30 minutes from Marsa Alam Airport and two hours from Hurghada, Elphistone Aparthotel is perfectly positioned along the Red Sea, offering both convenience and stunning views.

Distance from	Time needed	By
→ Luxor	140 min.	Car/Bus
→ Italy (Approximately)	3.5 hrs.	Plane
→ Poland (Approximately)	4 hrs.	Plane
→ Germany (Approximately)	4.5 hrs.	Plane
→ Europe (Approximately)	3 - 4 hrs.	Plane

Elphistone's strategic location connects you to iconic destinations, offering the perfect blend of adventure and convenience.



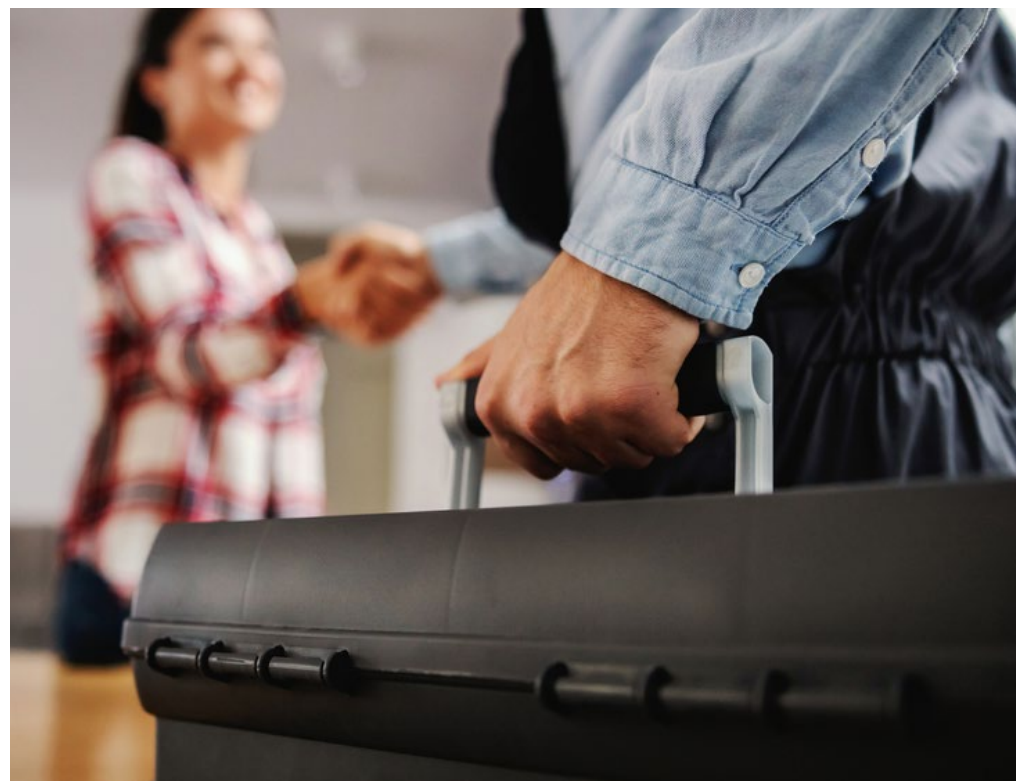
An underwater photograph featuring a diver on the right side, wearing a blue diving mask and a black regulator. The diver's long, light brown hair is visible. The water is a clear, vibrant blue. Numerous bright orange fish, likely Surge wrasse, are swimming around the diver. Some fish are in sharp focus, while others are blurred in the foreground and background, creating a sense of depth. The overall scene is bright and colorful, suggesting a healthy marine environment.

Your Gateway to Marsa Alam's Living Experience









## Elphistone Hotel Amenities & Services

At Elphistone, every detail is designed to enhance your stay and provide the perfect blend of comfort and convenience. Enjoy a wide range of amenities and services tailored to meet your needs:

### HOUSEKEEPING

Keeping your space pristine and welcoming every day.

### UTILITY SERVICES

Seamless living with essential utilities at your fingertips.

### RENTAL PROGRAMS

Flexible options for short or long-term stays.

### ON-SITE DESERT SAFARI

Experience thrilling desert safaris right from our doorstep.

### ON-SITE DIVING SPOT

Dive into Marsa Alam's vibrant reefs from our on-site diving spot.

### BEACH ACCESS

Step straight onto a stunning sandy beach.

### SANDY BEACH POOL

Relax and refresh in our inviting pool.

### RETAIL STRIP

Shop, dine, and unwind at a vibrant commercial hub.

### WATER SLIDES

Enjoy endless fun with our exciting waterslides.





## Unmatched Activities

Elphistone is a hub for marine and desert adventures:

### **DIVING & SNORKELING**

Discover Marsa Alam's iconic coral reefs and marine life.

### **DESERT & BEACH SAFARIS**

Experience the thrill of untouched natural landscapes.

### **FISHING TRIPS**

Reel in a unique experience on the Red Sea.

### **NATURAL WONDERS**

Explore nearby preserves like Wadi El Gemal and Al Nayzak, or visit renowned sites like Abu Dabab and Hamata Island.











**Unit Types:**

- Hotel Rooms (Fully Furnished)
- Studios
- 1 Bedroom
- 2 Bedrooms
- 3 Bedrooms

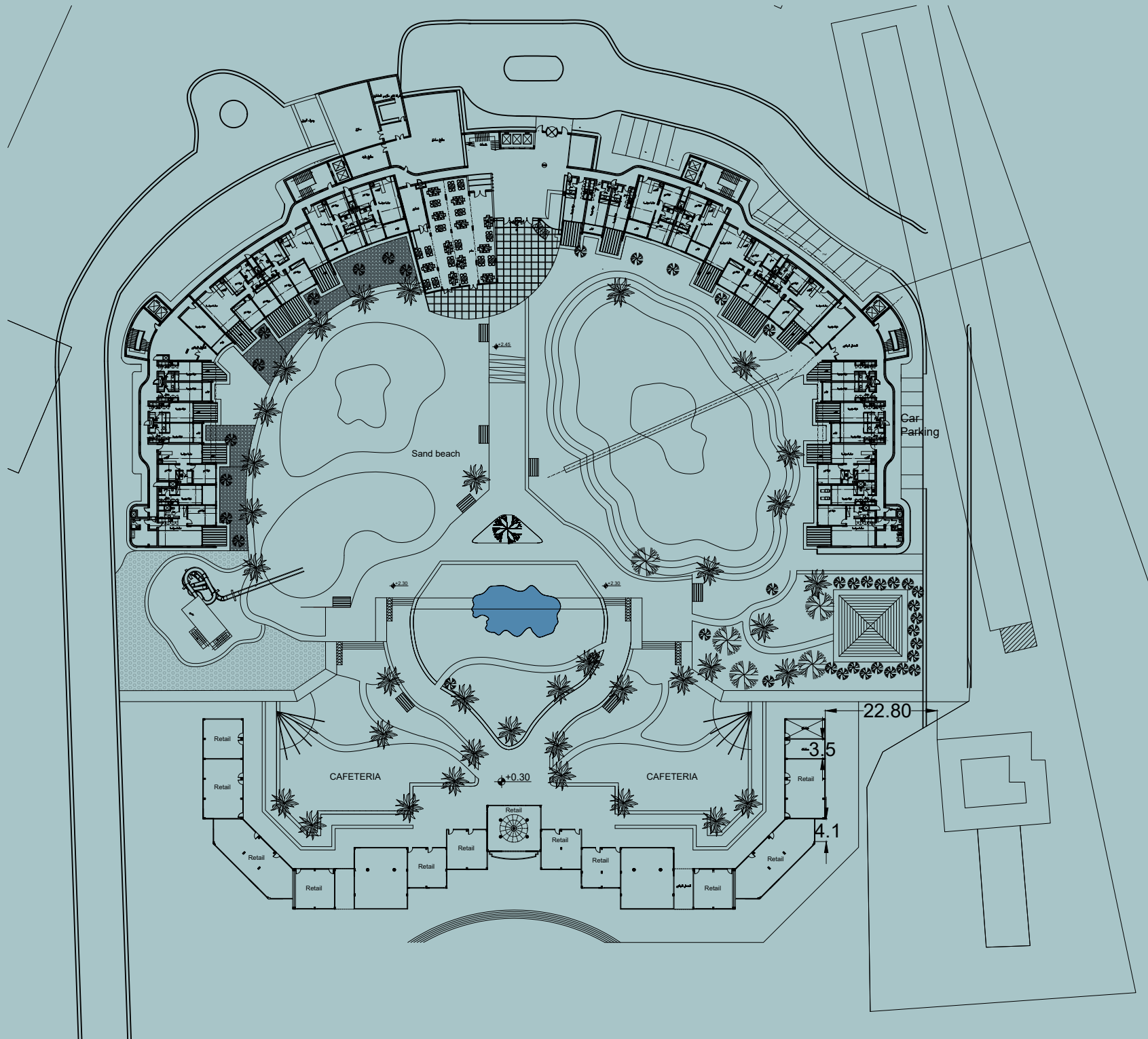
Hotel Rooms / Studio

1 Bedroom

2 Bedroom

3 Bedroom













## Unit Types Designed for Every Lifestyle

Elphistone Hotel & Suite Apartments offers a variety of thoughtfully designed unit types to suit your needs, whether you're seeking a cozy retreat or spacious family living. Choose from:

### **Studios** ( 35 – 43 m<sup>2</sup> )

Perfect for solo travelers or couples seeking a functional, compact space.

### **1-Bedroom Units** ( 35 & 79 m<sup>2</sup> )

Ideal for those who value privacy and a stylish layout.

### **2-Bedroom Units** ( 77 & 90 m<sup>2</sup> )

Spacious accommodations for families or small groups.

### **3-Bedroom Units** ( 125 m<sup>2</sup> )

Luxurious spaces for larger families or those seeking ultimate comfort.

### **Hotel Rooms**

Elegantly furnished and fully serviced for a seamless stay.

\*All units are delivered finished with ACs, excluding appliances, in unit amenities.

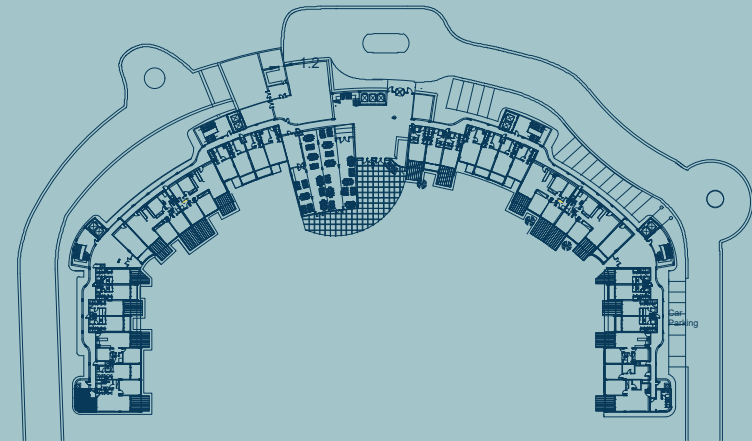


# HOTEL ROOM

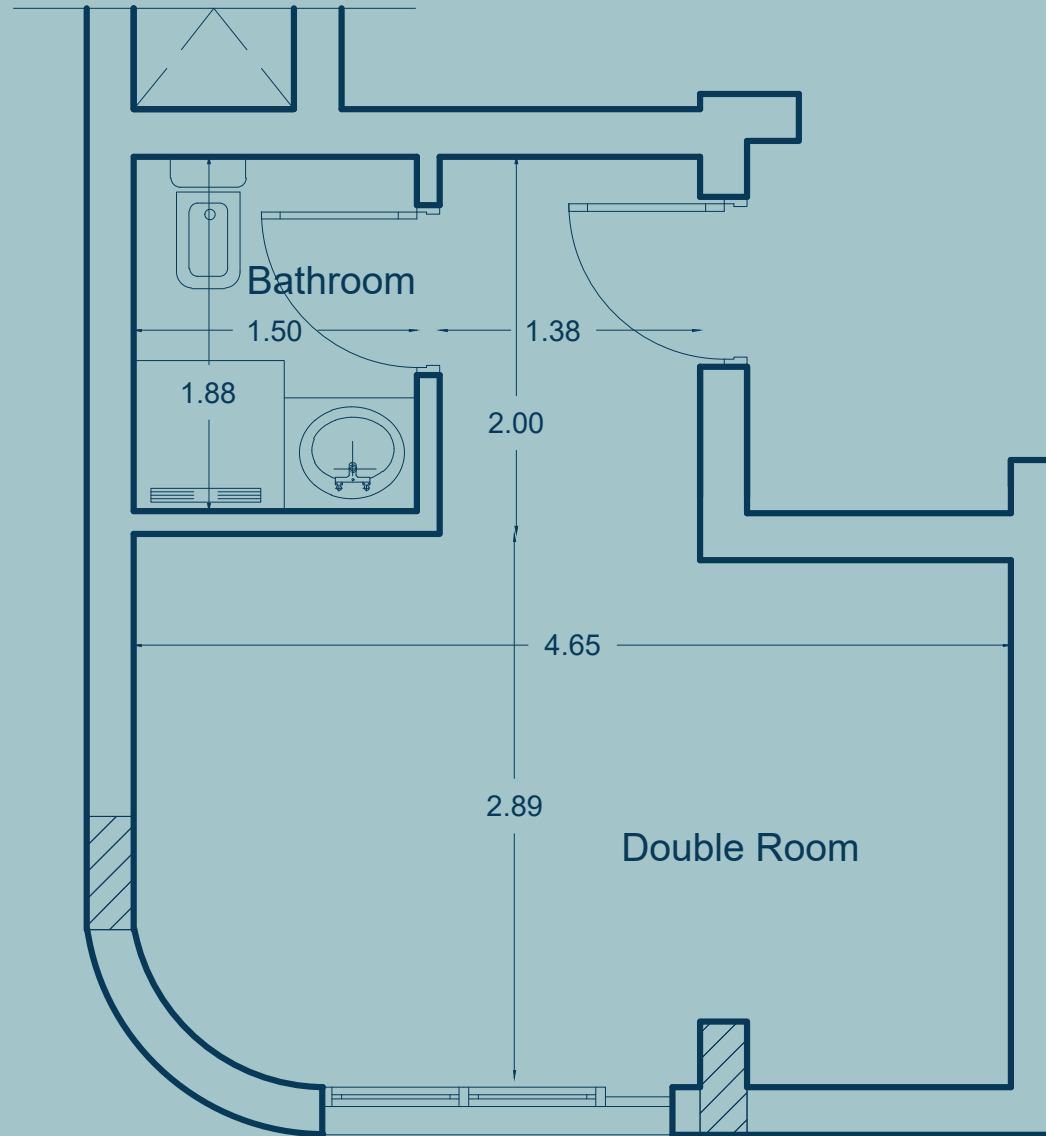
DOUBLE ROOM

---

<b>Total Area</b>	<b>24 M<sup>2</sup></b>
Double room	4.65 X 2.89
Toilet	1.50 X 1.88





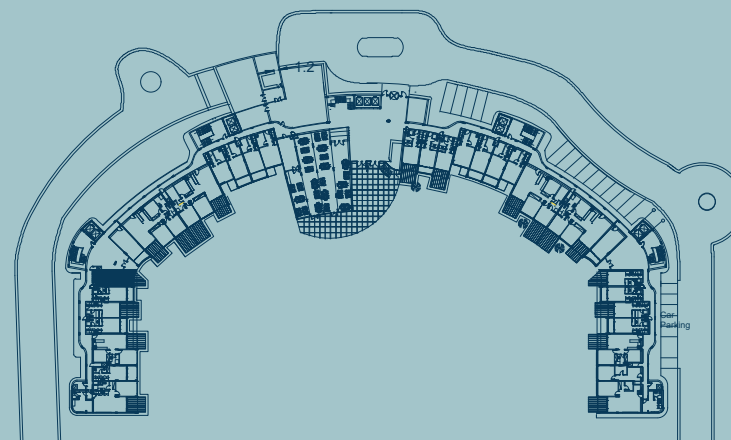


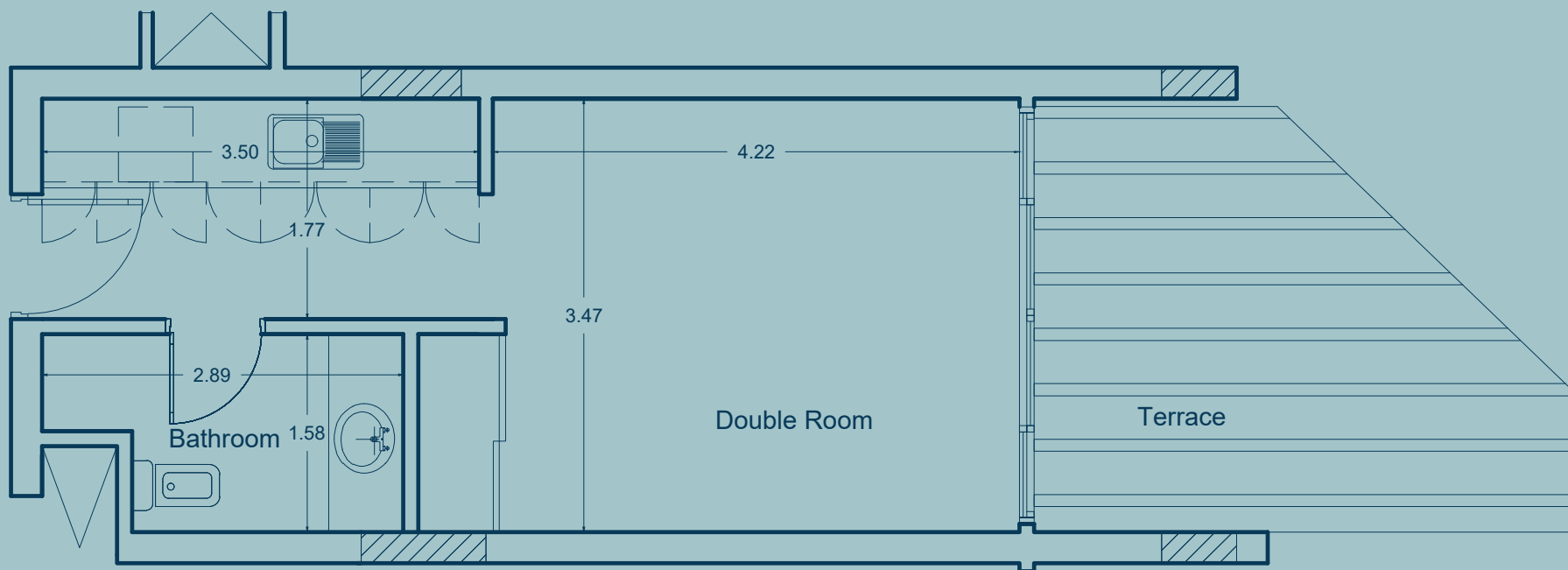


# STUDIO

---

<b>Total Area</b>	<b>36 M<sup>2</sup></b>
Double room	4.22 X 3.47
Toilet	2.89 X 1.58



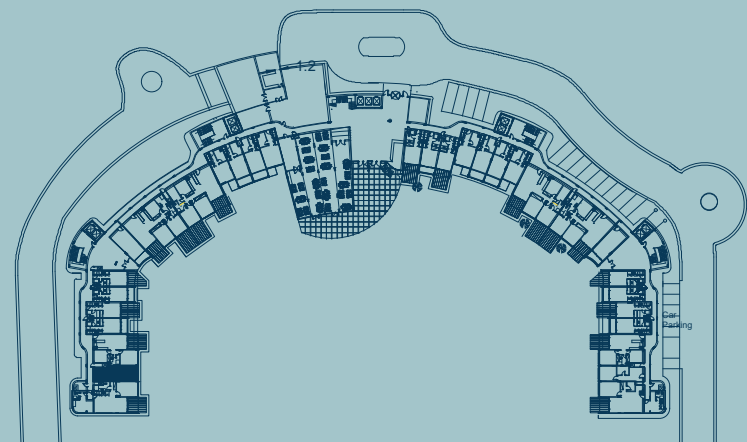


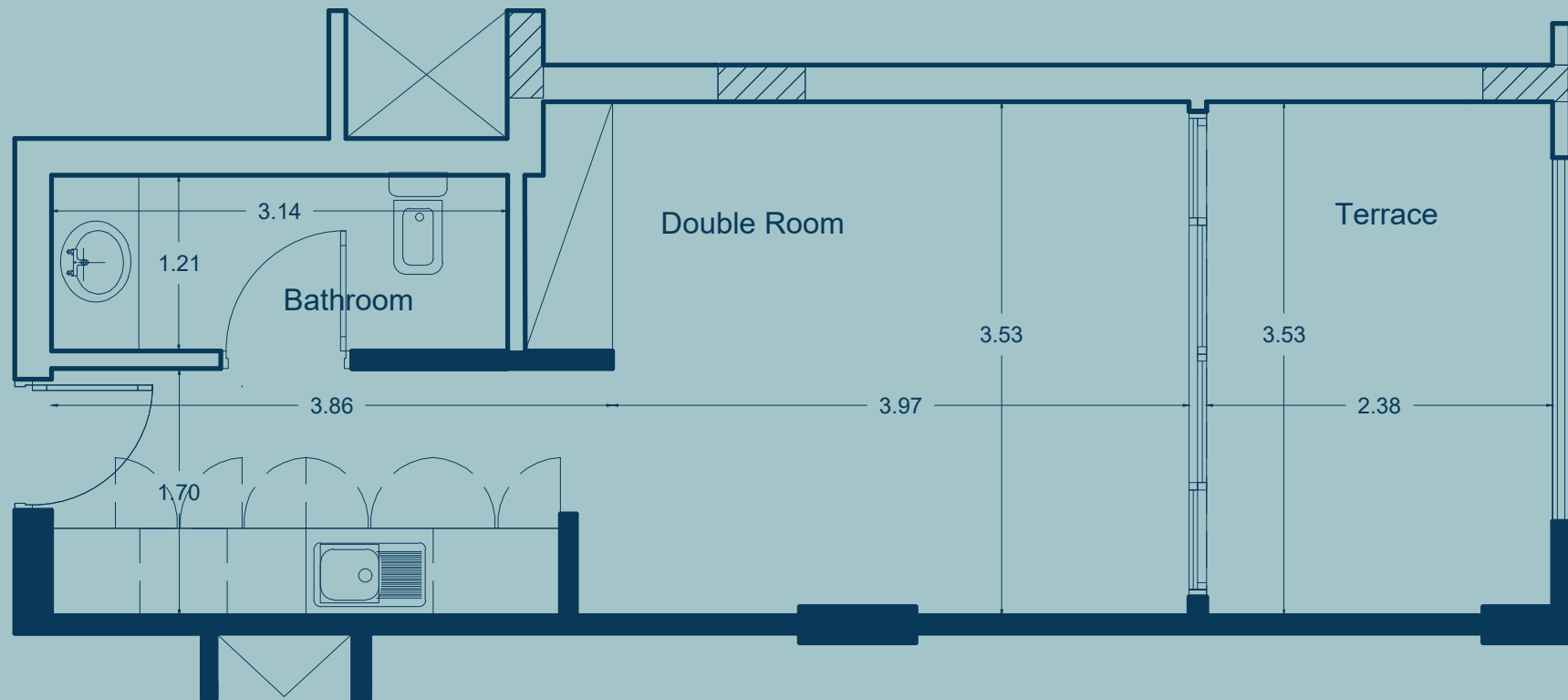


# STUDIO

---

<b>Total Area</b>	<b>38 M<sup>2</sup></b>
Double room	3.97 X 3.53
Toilet	3.14 X 1.21
Terrace	2.38 X 3.53



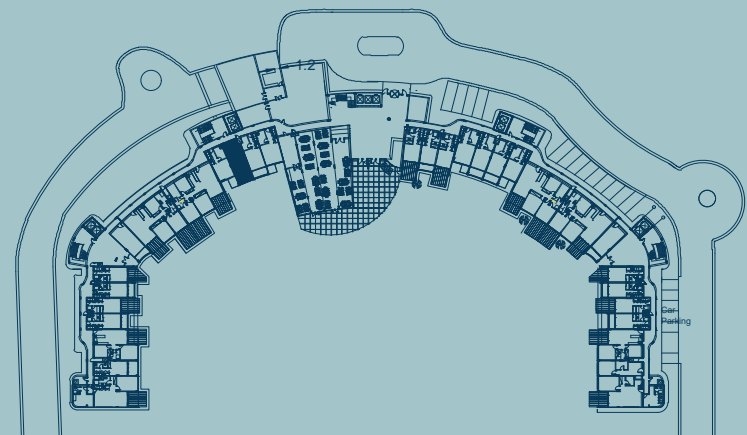


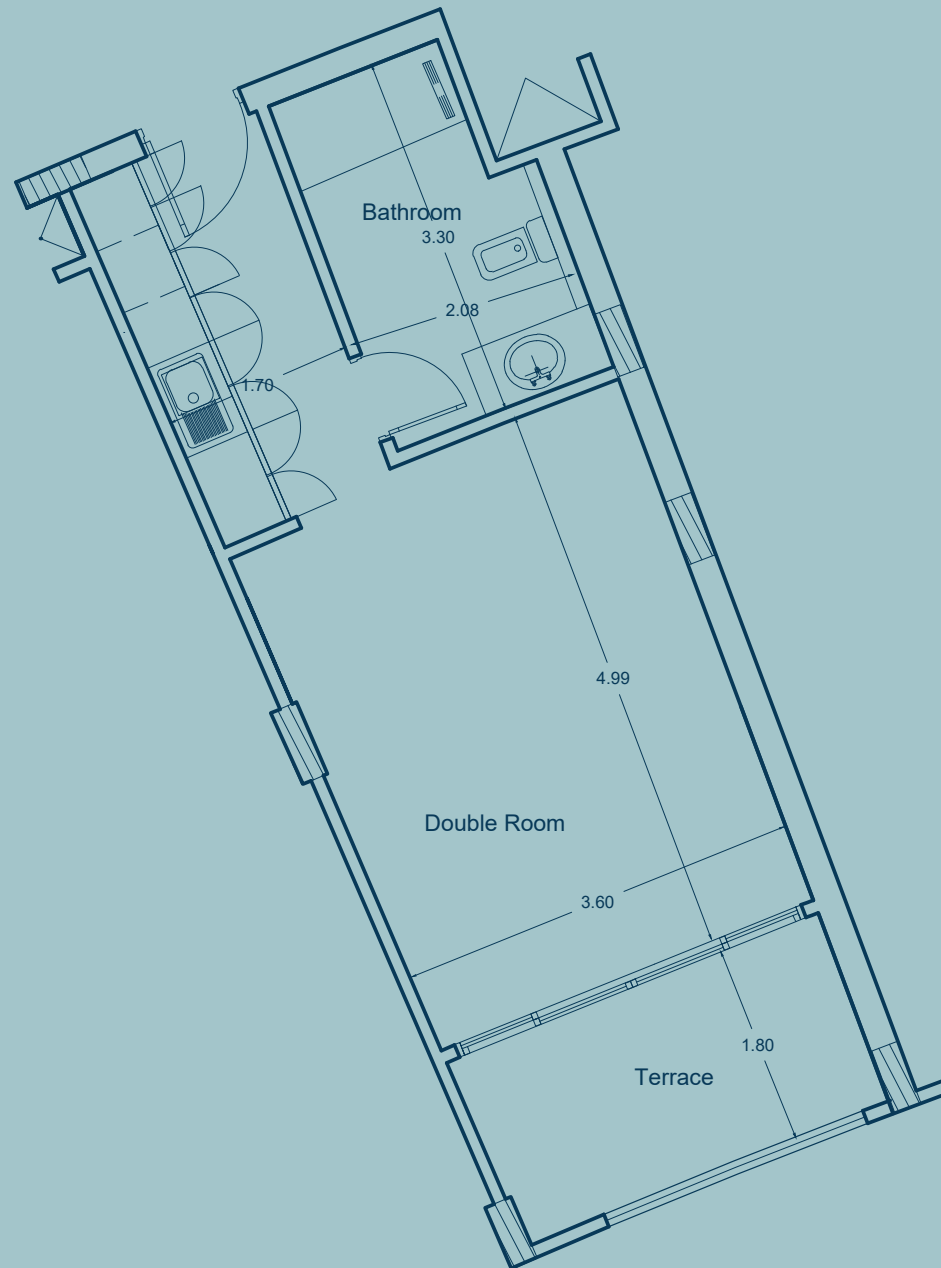


# STUDIO

---

<b>Total Area</b>	<b>42 M<sup>2</sup></b>
Double room	4.99 X 3.60
Toilet	3.30 X 2.08
Terrace	3.60 X 1.80



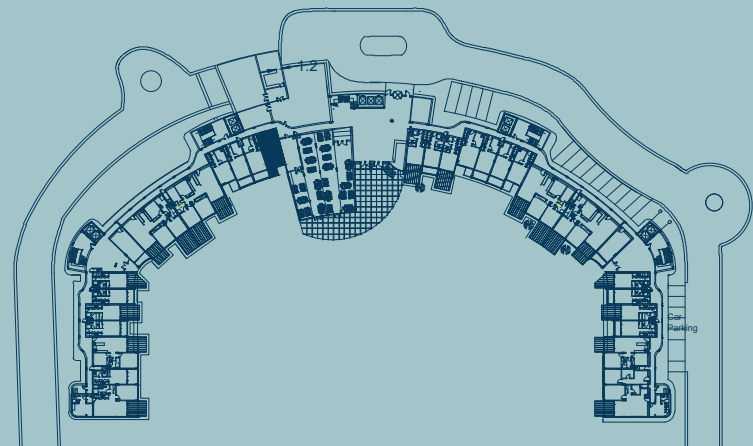


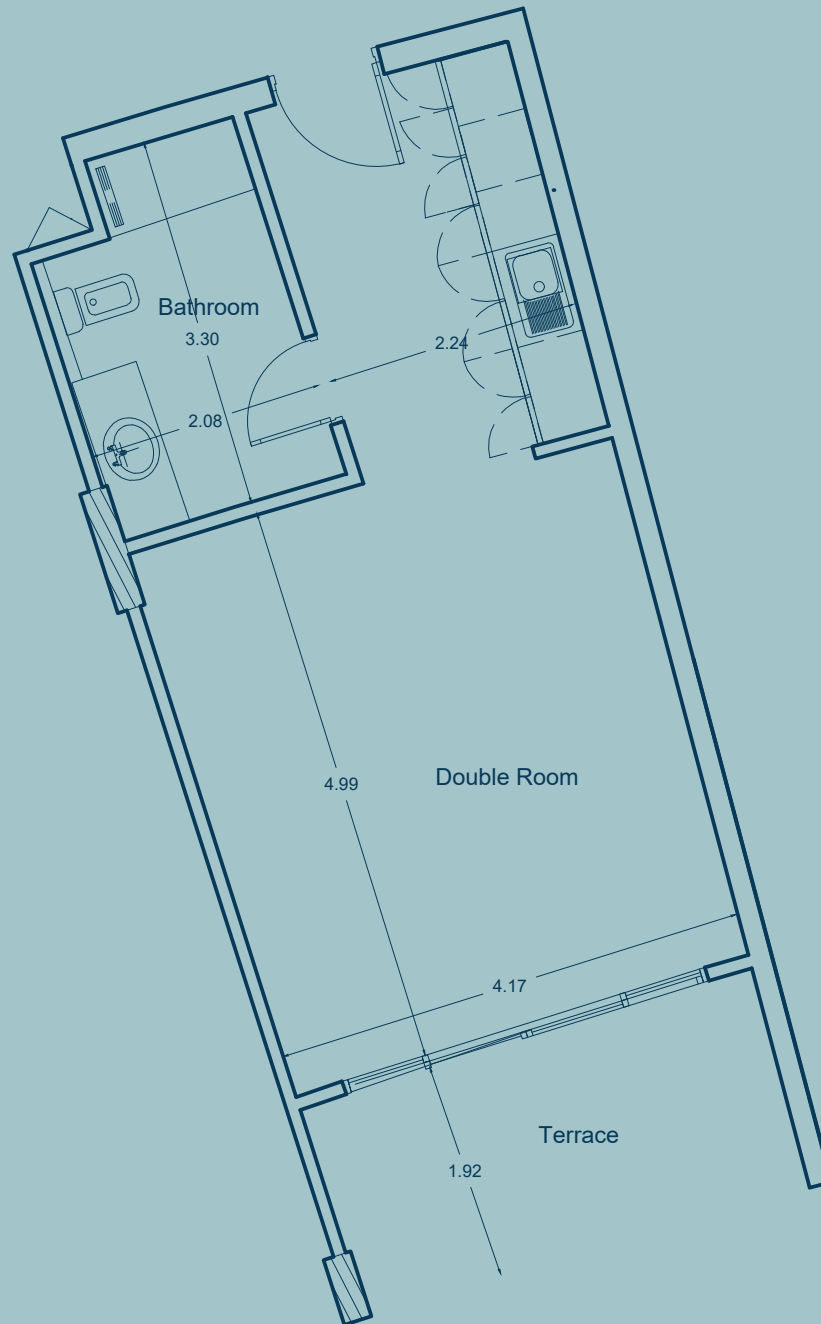


# STUDIO

---

<b>Total Area</b>	<b>43 M<sup>2</sup></b>
Double Room	4.99 X 4.17
Toilet	3.30 X 2.08
Terrace	4.17 X 1.92



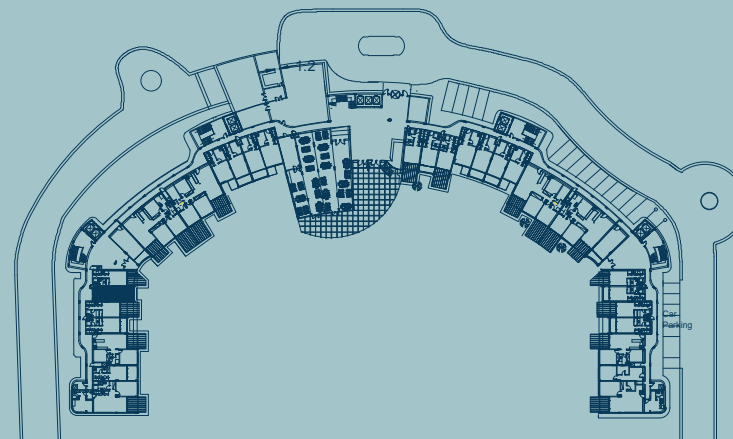




# STUDIO

---

<b>Total Area</b>	<b>35 M<sup>2</sup></b>
Double room	4.22 X 3.41
Toilet	2.89 X 1.58







An underwater photograph showing a person's legs and a surfboard. The person is wearing a black and white striped swimsuit and a black wristwatch. A black leash is attached to their ankle and is coiled in the water. The surfboard is white with a yellow fin. The water is a deep blue with some white foam or bubbles. The text "Your gateway to the Red Sea's wonders." is overlaid in white.

**Your gateway** to the Red Sea's wonders.



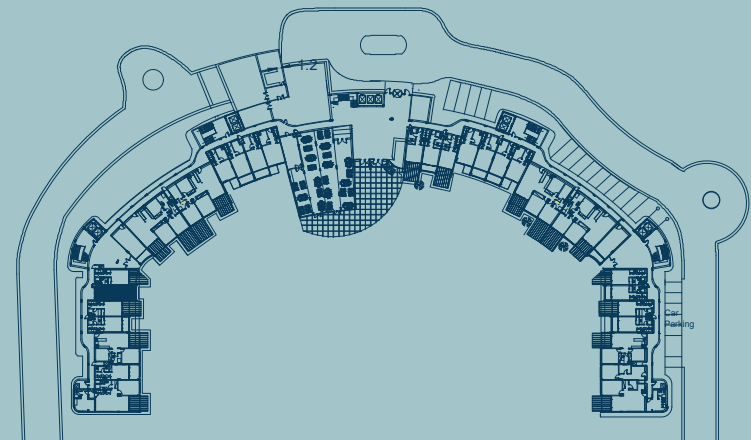


# APARTMENT

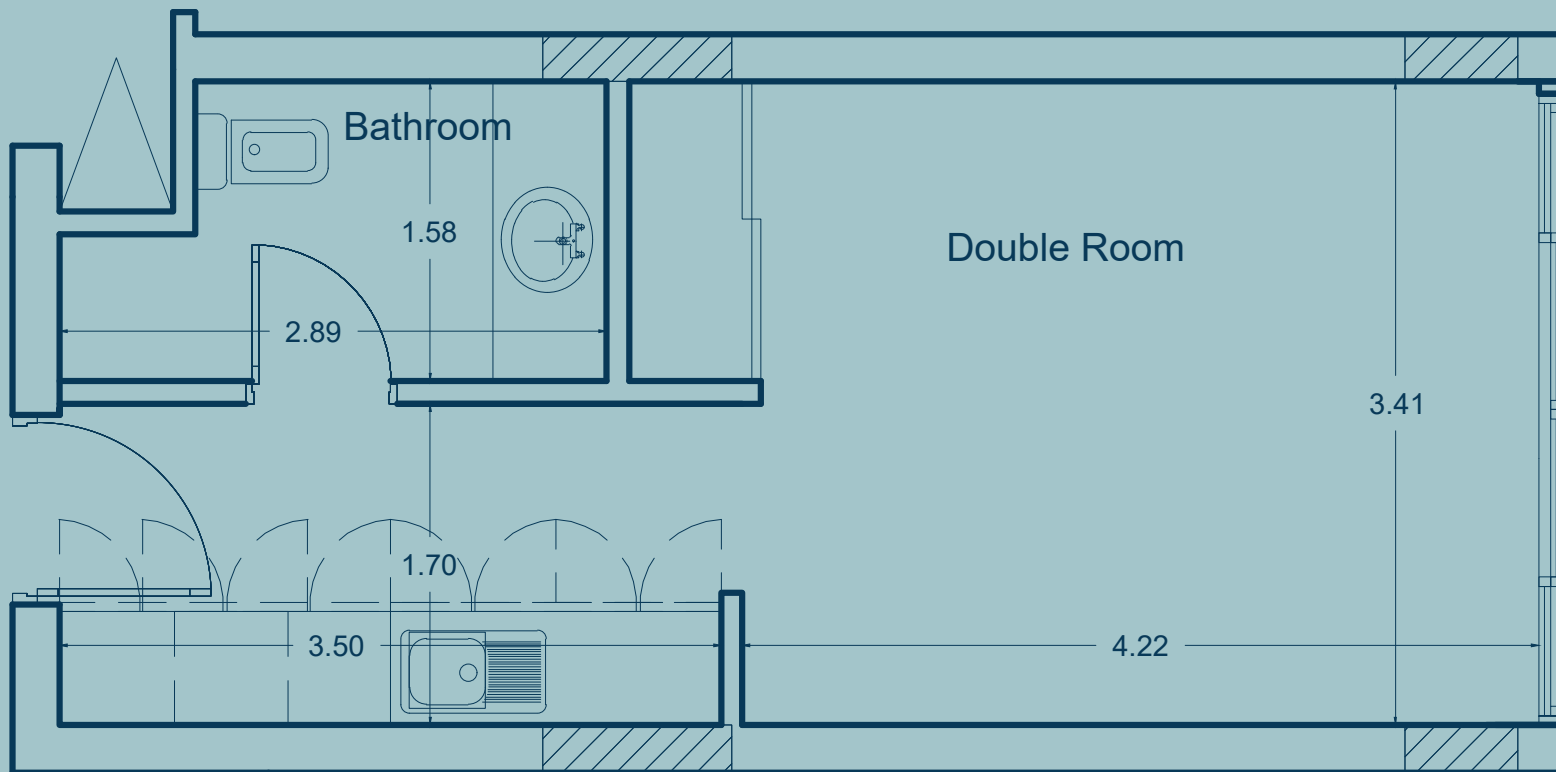
1 BED ROOM

---

<b>Total Area</b>	<b>35 M<sup>2</sup></b>
Double room	4.22 X 3.41
Toilet	2.89 X 1.58





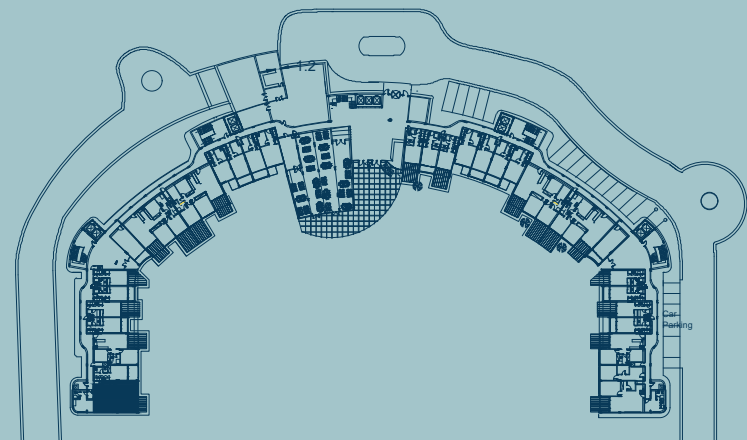


# APARTMENT

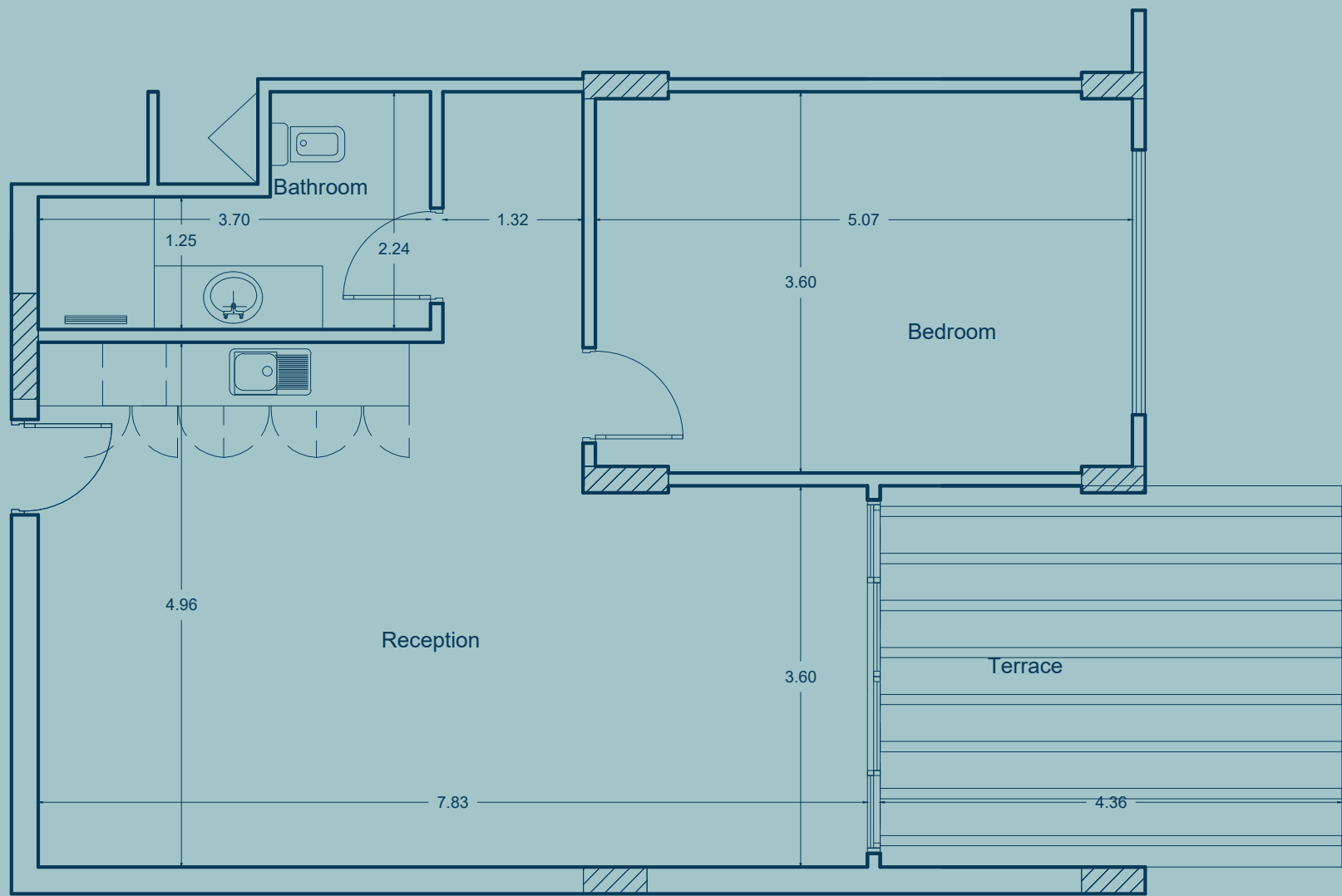
1 BEDROOM

---

<b>Total Area</b>	<b>79 M<sup>2</sup></b>
Reception	7.83 X 4.96
Bedroom	5.07 X 3.60
Toilet	4.02 X 2.24





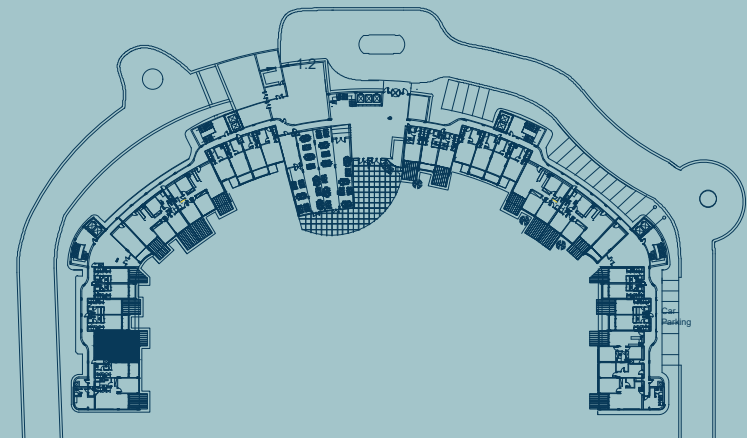


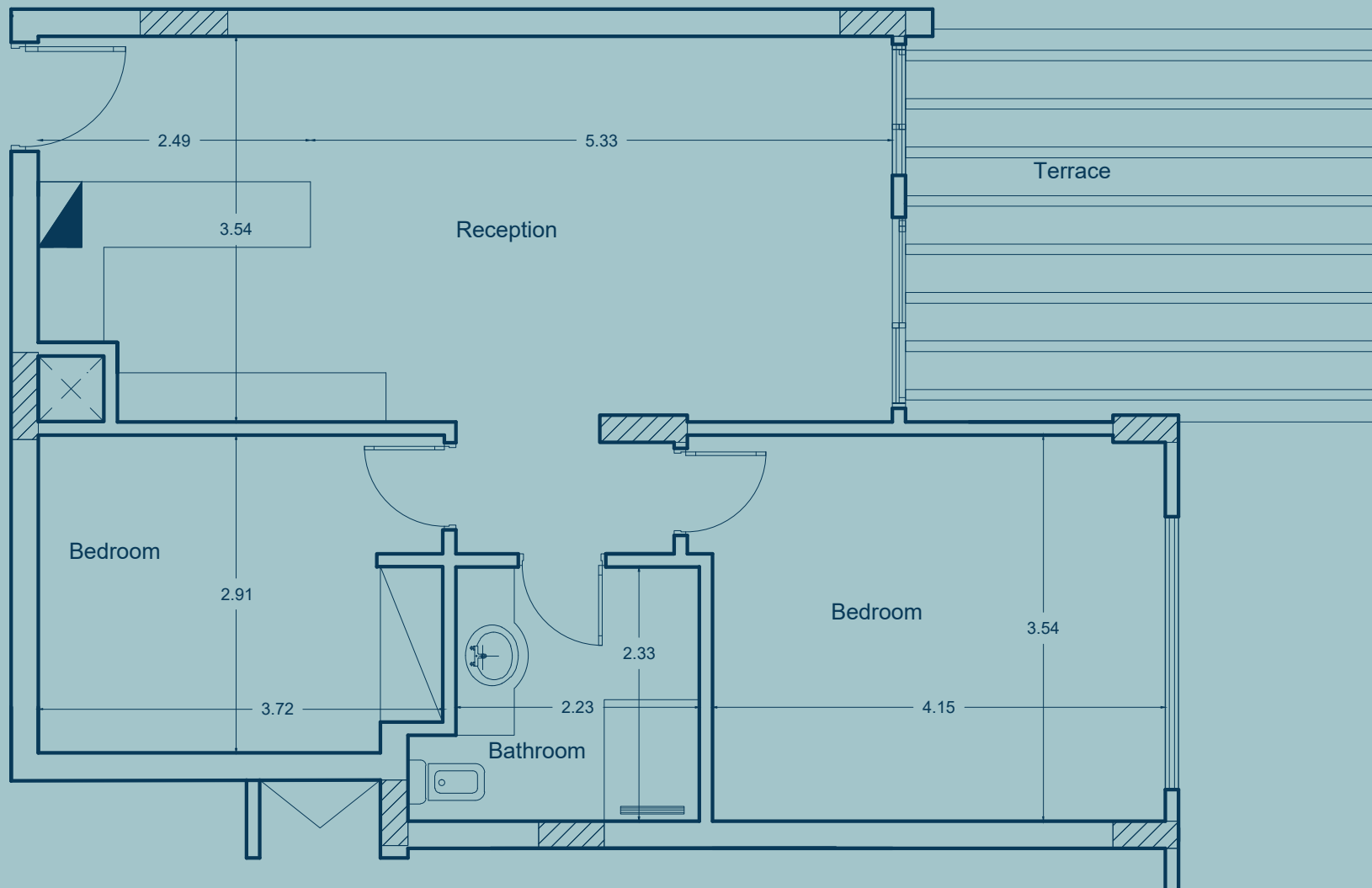
# APARTMENT

2 BEDROOMS

---

<b>Total Area</b>	<b>77 M<sup>2</sup></b>
Reception	7.82 X 3.54
Bedroom 1	4.15 X 3.54
Bedroom 2	3.72 X 2.91
Toilet	2.23 X 2.33





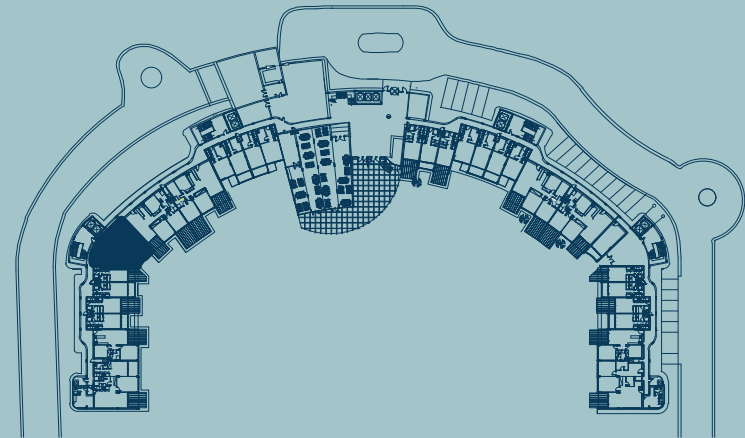


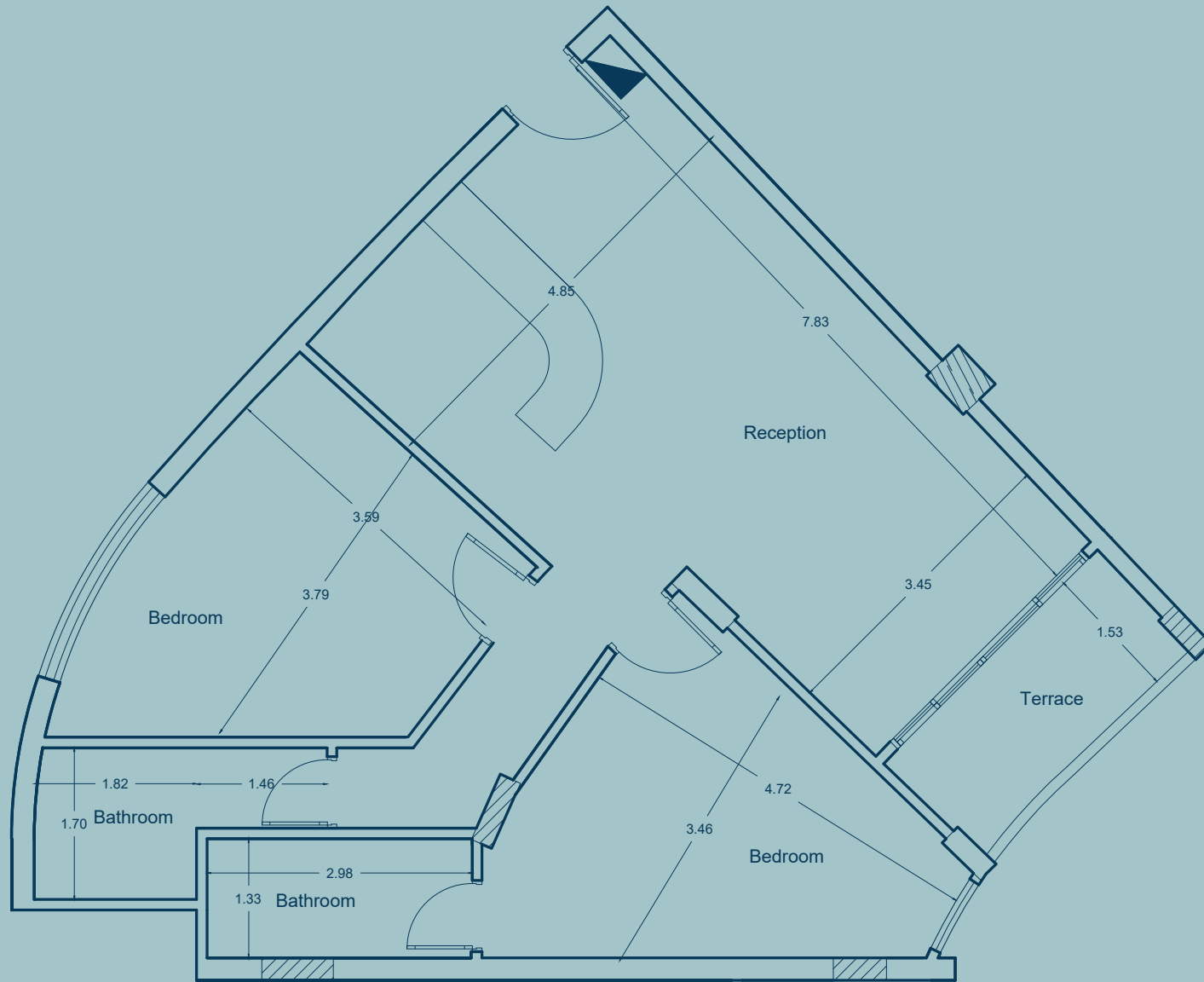
# APARTMENT

2 BEDROOMS

---

<b>Total Area</b>	<b>90 M<sup>2</sup></b>
Reception	7.83 X 4.85
Master Bedroom	4.72 X 3.46
Toilet	2.98 X 1.33
Bedroom	3.79 X 3.59
Toilet	3.28 X 1.70



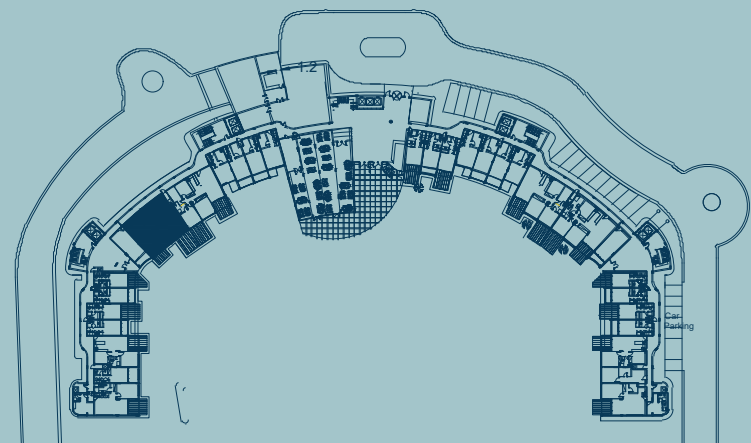


# APARTMENT

3 BEDROOMS

---

<b>Total Area</b>	<b>125 M²</b>
Reception	7.83 X 3.93
Master Bedroom	4.05 X 3.53
Toilet	2.78 X 2.32
Bedroom 1	3.40 X 3.03
Bedroom 2	5.00 X 3.61
Toilet	4.53 X 2.09
Terrace	3.93 X 2.49







**Developed by ICHTESAS**

Company For Tourism Investment

Tower 7 Diplomats, Nile Corniche St. Maadi . Cairo

**Operated by Elphistone Hotel**

Marsa Alam , 25 km north Marsa Alam